

MONTHLY MEMBERSHIP PROGRESS REPORT

District 33 K

Results as of: 4/30/2024

GMT:

LOCATION MASSACHUSETTS

GMT CA

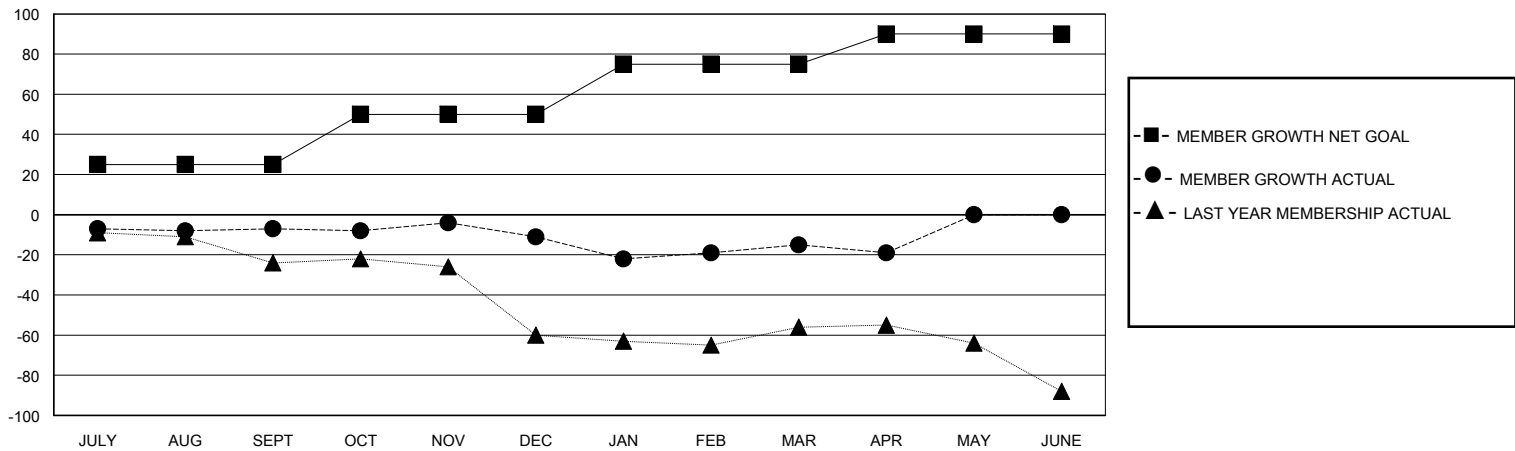
Clubs			
RESULTS FOR 2023-2024			
QUARTER	NEW CLUB GOAL	NEW CLUBS	DROPPED CLUBS
JULY/AUG/SEPT	0	0	0
OCT/NOV/DEC	0	0	0
JAN/FEB/MAR	1	0	0
APR/MAY/JUNE	0	0	0

Members			
RESULTS FOR 2023-2024			
QUARTER	MEMBER GROWTH NET GOAL	MEMBER GROWTH ACTUAL	DROPPED MEMBERS ACTUAL (including transfers)
JULY/AUG/SEPT	25	18	24
OCT/NOV/DEC	25	44	44
JAN/FEB/MAR	25	22	26
APR/MAY/JUNE	15	8	11

GOALS AND ACTUAL NEW CLUBS CUMULATIVE



GOALS AND ACTUAL MEMBERS CUMULATIVE



DROPPED CLUBS: 0	30 CLUBS OF 47 ADDED 1 OR MORE NEW MEMBERS	GENDER DISTRIBUTION MALE 945 (62.96%) FEMALE 555 (36.98%)
DROPPED MEMBERS DECEASED 15 CLUB CANCELLED 0 OTHER 90 TOTAL 105	CLICK HERE FOR CUMULATIVE MEMBERSHIP DATA	TOTAL FAMILY UNIT MEMBERS 172 FAMILY MEMBERS PAYING HALF DUES 86